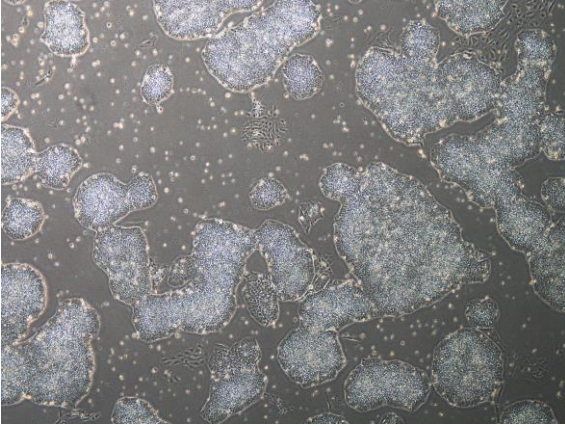
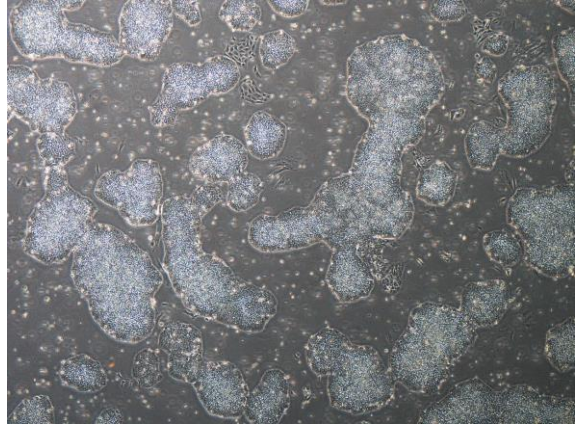


【 CiRA-j-1052 】 Morphology of iPSC colonies

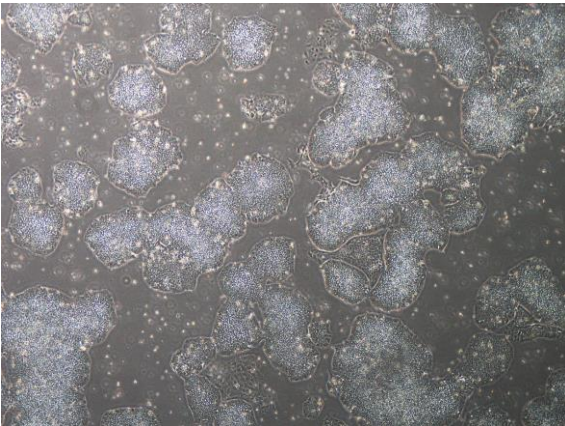
CiRA-j-1052-A: passage-2



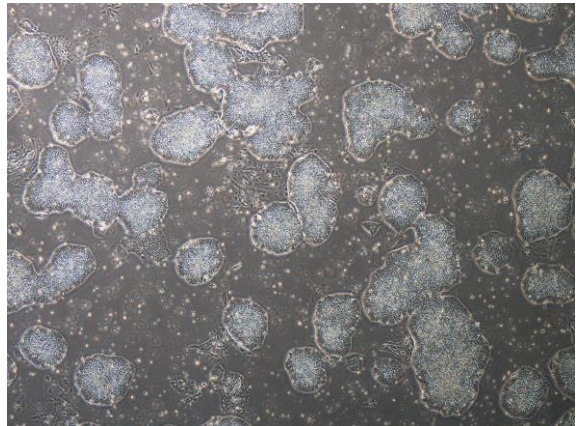
CiRA-j-1052-B: passage-2



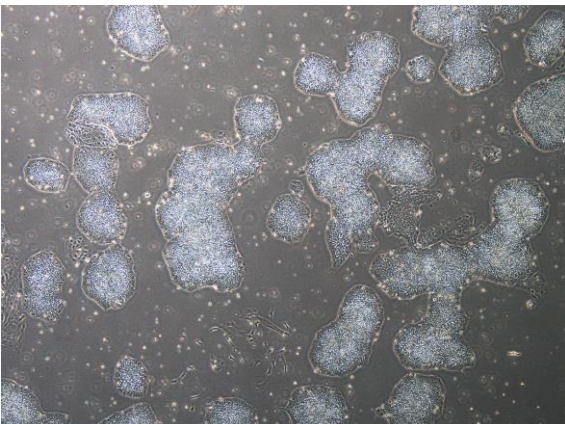
CiRA-j-1052-C: passage-2



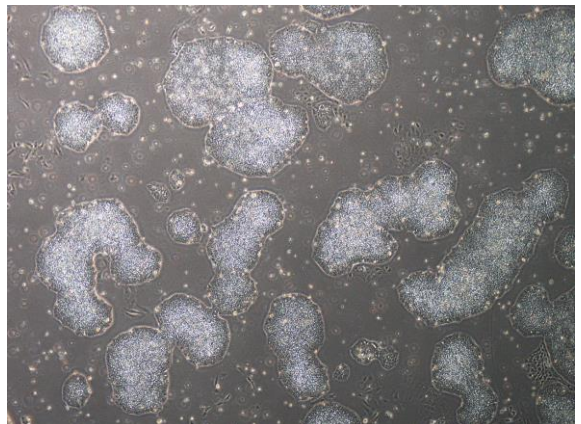
CiRA-j-1052-D: passage-2



CiRA-j-1052-E: passage-2



CiRA-j-1052-F: passage-2



(All images were captured at 4x magnification)